

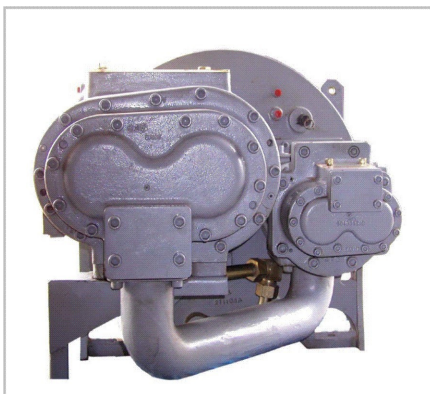
## World's first from Elgi!



Elgi takes the technological leap with the recent launch of two-stage axis air end model 284/159 for continuous high volume and high pressure applications. This all new two-stage air end, encompassing the energy efficiency of axis technology, will become the first air end ever built with a displacement of 1500 cfm with the 'bar' raised up to 500 psi (35 bar).

The Axis two stage air end has an inherent advantage of internally drilled oil holes thus reducing the number of hoses in the oil circuit. Being compact it can be used in existing compressor package with minimum modifications. It also enables easier ducting in the compressor package with its new arrangement of individual stages of air end. Rotors use a unique 'N' profile design in a 4/5 lobe combination and are engineered to increase the efficiency of compressors. Another interesting feature of this air end is that it offers a guaranteed bearing life of 40,000 hours of operation at the design point.

The Axis 284 / 159 has been developed as a reliable solution for the growing high pressure and high flow compressed air requirements of market segments like mining, construction and exploration mining. This air end range, with its capability to produce higher volume of air at high pressure, eliminates the need for combination of compressors required for these high duty applications. It also facilitates faster drilling rates and reduced downtime.



Elgi has won a contract from an OEM in Canada to supply air ends for their screw compressors. The air ends supplied are customized to meet the compressed air demands of the customer and are rated for discharge pressure of 35 bar. Though Elgi air ends have been used for many years in Europe and America, this deal is significant because it represents our penetration in the North American market through independent compressor packagers.

The 'Drill Fest show' in Gold Coast provided a fitting backdrop for the launch of Elgi axis 284/159 in Australia. In another major deal, Elgi has supplied air ends to an OEM for screw compressor packages. These air ends are custom designed to withstand the hot, humid and dusty conditions in Australia and are used primarily for heavy and continuous duty applications like mining and exploration, where the pressure requirement is high.